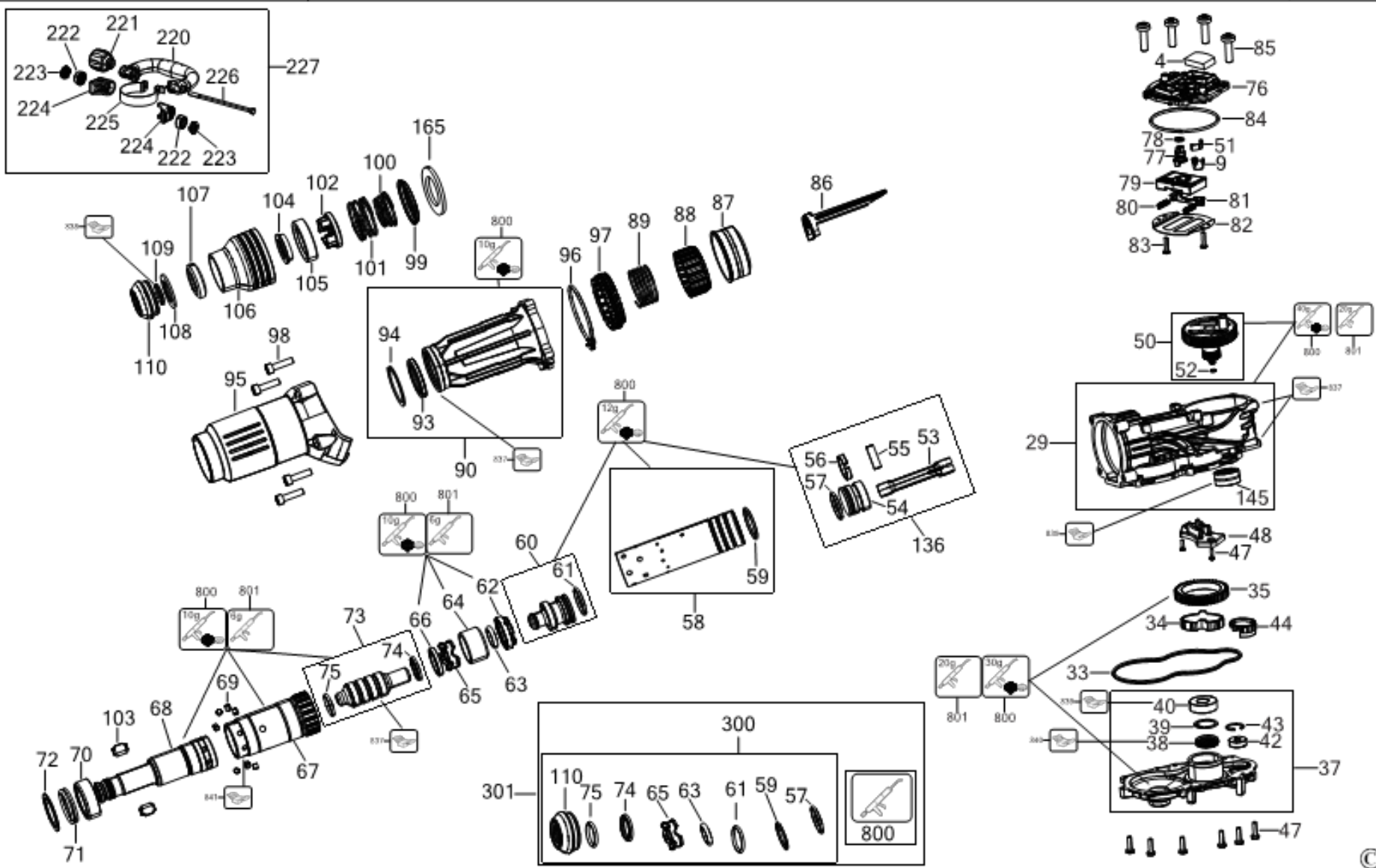




DCH892

TYP.
1



E21089

www.2helpu.com

17-11-2021

©

Parts List DCH892X2 CHIPPING HAMMER 1

Item	Part Number	Qty	Part Description	General Description	Other Info	Repair Inst	Markets
1	N454966	1	END CAP			No	QW
2	N426918	1	HOUSING MOTOR			No	QW
3	N548557	8	SCREW			No	QW
4	N481045	1	FELT			No	QW
5	330065-08	4	SCREW	M4x18 T20		No	QW
7	NA109211	1	SELECTOR		GREY	No	QW
8	N402322	1	SIDE RH			No	QW
9	N607940	1	CAP			No	QW
10	N402321	1	SIDE LH			No	QW
11	N513722	1	COVER-TOP			No	QW
12	N548557	4	SCREW			No	QW
13	N453525	1	PIN			No	QW
14	330065-08	1	SCREW	M4x18 T20		No	QW
15	330065-08	2	SCREW	M4x18 T20		No	QW
16	N548557	4	SCREW			No	QW
17	NA092857	1	COVER REAR		YELLOW	No	QW
18	N497944	1	BELLOWS			No	QW
19	NA098577	1	LENS			No	QW
20	N680282	2	RUBBER			No	QW
21	330065-08	1	SCREW	M4x18 T20		No	QW
22	N565828	1	RETAINER			No	QW
23	330065-06	1	SCREW			No	QW
24	N122099	1	BLOCK			No	QW
25	N461735	1	SPRING			No	QW
26	N728012	1	INSERT			No	QW
27	N728013	1	INSERT			No	QW
28	N467560	1	PLATE			No	QW
29	N850598	1	HOUSING SA			No	QW
30	N518219	1	BUTTON			No	QW
31	N152623	1	STOP			No	QW
32	N580503	1	CLUTCH SA			No	QW
33	N447147	1	SEAL			No	QW

Parts List DCH892X2 CHIPPING HAMMER 1

Item	Part Number	Qty	Part Description	General Description	Other Info	Repair Inst	Markets
34	N781072	1	BEARING SINTER			No	QW
35	N580506	1	GEAR			No	QW
36	NA002836	1	CLAMSHELL SET			No	QW
37	N851025	1	GEARCASE COVER SA			No	QW
38	N422626	1	SEAL			No	QW
39	488147-01	1	CIRCLIP			No	QW
40	330003-13	1	BEARING			No	QW
42	330003-60	1	BEARING			No	QW
43	N362699	1	CIRCLIP			No	QW
44	N537281	1	SPACER			No	QW
47	N548557	8	SCREW			No	QW
48	N783357	1	CLAMP			No	QW
50	N580511	1	CRANKSHAFT			No	QW
51	N520790	1	DETENT			No	QW
52	N537973	1	O RING			No	QW
53	N662675	1	CON ROD			No	QW
54	N431764	1	PISTON			No	QW
55	N026610	1	PIN			No	QW
56	N439990	1	PISTON RING			No	QW
57	487296-00	1	O RING			No	QW
58	N851029	1	CYLINDER SA			No	QW
59	N587667	1	O RING			No	QW
60	N580521	1	RAM SA			No	QW
61	487296-00	1	O RING			No	QW
62	N400498	1	BUSH			No	QW
63	N389365	1	O RING			No	QW
64	N476023	1	DAMPER			No	QW
65	N515559	1	DAMPER			No	QW
66	N389693	1	WASHER			No	QW
67	N580522	1	SPINDLE			No	QW
68	N580524	1	SPINDLE			No	QW
69	N548304	5	PIN			No	QW

Parts List DCH892X2 CHIPPING HAMMER 1

Item	Part Number	Qty	Part Description	General Description	Other Info	Repair Inst	Markets
70	N475966	1	RING			No	QW
71	N514255	1	DAMPER			No	QW
72	N392234	2	WASHER			No	QW
73	N580525	1	BEAT PIECE			No	QW
74	N594490	1	SEAL			No	QW
75	N432561	1	O RING			No	QW
76	N409943	1	COVER			No	QW
77	N504016	1	ECCENTRIC			No	QW
78	N515556	1	O RING			No	QW
79	N410143	1	SLIDER			No	QW
80	N520791	2	SPRING			No	QW
81	N410898	1	CONNECTOR			No	QW
82	N427022	1	PLATE			No	QW
83	330065-08	2	SCREW	M4x18 T20		No	QW
84	N455140	1	O RING			No	QW
85	N548557	4	SCREW			No	QW
86	N481044	1	SLIDER			No	QW
87	N408081	1	BUSH			No	QW
88	N580533	1	SLEEVE			No	QW
89	N497938	1	SPRING			No	QW
90	N580535	1	HOUSING FRONT			No	QW
91	N518220	1	SPRING			No	QW
93	N392582	1	SEAL			No	QW
94	N181847	1	LOCKING RING			No	QW
95	N416528	1	COVER HOUSING			No	QW
96	N431324	1	GASKET			No	QW
97	N420195	1	BUSH			No	QW
98	949886-32	4	SCREW			No	QW
99	N516486	1	GUIDE			No	QW
100	N520784	1	SPRING			No	QW
101	N520782	1	SPRING			No	QW
102	N408040	1	BUSH			No	QW

Parts List DCH892X2 CHIPPING HAMMER 1

Item	Part Number	Qty	Part Description	General Description	Other Info	Repair Inst	Markets
103	N511836	2	LOCKING DEVICE			No	QW
104	N511805	1	DAMPER			No	QW
105	N511834	1	BUSH			No	QW
106	N468816	1	SLEEVE			No	QW
107	NA176490	1	RUBBER			No	QW
108	N516487	1	WASHER			No	QW
109	N522784	1	RETAINER			No	QW
110	NA176495	1	SEAL			No	QW
111	NA114352	1	LABEL		LED LABEL	No	QW
136	N580512	1	PISTON SA			No	QW
140	NA002226	1	BRAND LABEL	54V BRUSHLESS RH	54V	No	QW
141	NA002225	1	BRAND LABEL	54V BRUSHLESS LH	54V	No	QW
142	N929414	2	LABEL			No	QW
143	N507221	1	LABEL			No	QW
144	N551374	1	LABEL			No	QW
145	N408073	1	BEARING,NEEDLE			No	QW
146	NA114349	1	RATING PLATE		EURO	No	QW
148	N665053	1	LABEL			No	QW
150	330065-35	2	SCREW			No	QW
151	330065-08	8	SCREW	M4x18 T20		No	QW
152	N501559	1	SPRING			No	QW
153	N497943	1	BELLOWS			No	QW
160	N592375	1	ROTOR SA			No	QW
161	330019-05	4	SCREW			No	QW
162	N417208	1	BAFFLE			No	QW
165	N578605	1	FELT			No	QW
166	NA144538	1	MOTOR & SWITCH SA			No	QW
170	N747545	1	MODULE			No	QW
195	90611830	2	SCREW		TRACKER	No	QW
220	N536691	1	SIDE HANDLE			No	QW
221	487291-00	1	KNOB SA			No	QW
222	479317-00	2	WASHER LOCK			No	QW

Parts List DCH892X2 CHIPPING HAMMER 1

Item	Part Number	Qty	Part Description	General Description	Other Info	Repair Inst	Markets
223	479319-00	2	CLAMPING INSERT			No	QW
224	479320-00	2	WASHER CLAMP			No	QW
225	N470725	1	CLAMP			No	QW
226	487343-00	1	BOLT			No	QW
227	N470872	1	LOOP HANDLE			No	QW
300	N745048	1	SERVICE KIT			No	QW
800	578970-06	1	GREASE 150 GMS			No	QW
801	870889-02	1	GREASE			No	QW
837	1003975-99	1	S.T.INSERTION TOOL			No	QW
837	1003973-99	1	S.T.SEAL FITTING TOOL			No	QW
837	1003971-99	1	S.T.SEAL FITTING TOOL			No	QW
837	1003974-99	1	S.T.SUPPORT JIG			No	QW
838	559651-99	1	S.T.CIRCLIP REMOVER			No	QW
838	1003976-99	1	S.T.CIRCLIP REMOVER			No	QW
839	1003979-99	1	S.T.BEARING INSERTOR			No	QW
840	1003978-99	1	S.T.INSERTION TOOL			No	QW
841	1003977-99	1	S.T.PULLER			No	QW
850	N544162	1	SERVICE TOOL			No	QW
861	N895775	1	KITBOX			No	QW
866	N491552	2	BATTERY 3 X18V-9.0AH-162WH	DCB547-XJ	DCB547-XJ	No	QW
867	N462141	1	SAFETY CAP			No	QW
871	N473860	1	CHARGER	DCB118-QW		No	QW